

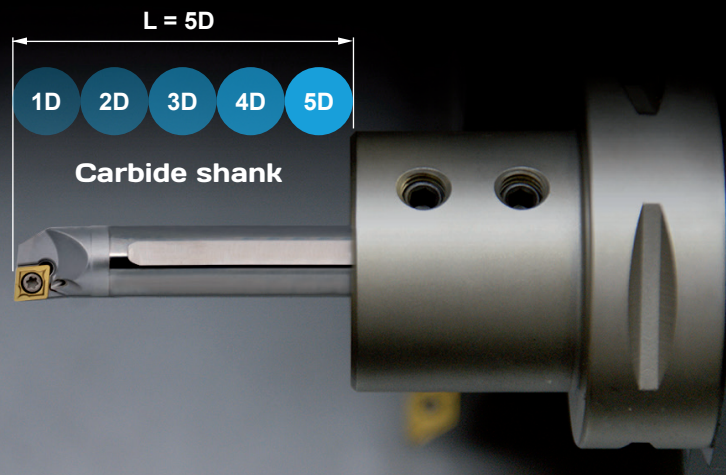
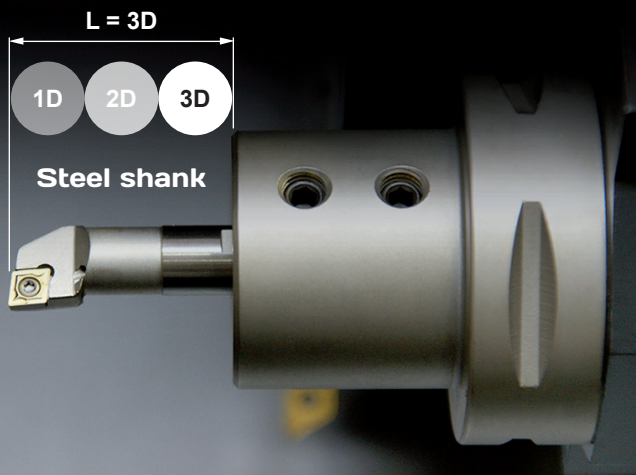


Carbide boring bar

STEADYFAST

Features

- Better rigidity than steel bars.
- Excellent cutting performance in wide range of boring size even at vibration cutting condition.
- Longer tool life and excellent surface finish.
- Range starting at $\varnothing 6''$. and minimum bore diameter of $.480''$.





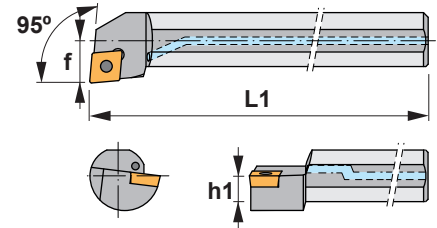
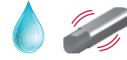
E- SCLC 95°

Characteristics:

Carbide boring bar equipped with rhombic positive insert (angle 80°).

Range starting at Ø6 inches and minimum bore diameter of 0.375 inches.

Axial 0°
Radial -6°

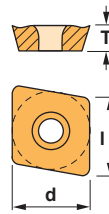


Reference	L1	f	Ø	Ø min.	h1	Insert size			Nm
E06M-SCLCR2	6.00	0.250	0.375	0.480	0.174	CC..21.5..	1425	5507	0.9
E06M-SCLCL2	6.00	0.250	0.375	0.480	0.174	CC..21.5..	1425	5507	0.9
E08R-SCLCR2	8.00	0.291	0.500	0.598	0.235	CC..21.5..	1425	5507	0.9
E08R-SCLCL2	8.00	0.291	0.500	0.598	0.235	CC..21.5..	1425	5507	0.9
E10S-SCLCR3	10.00	0.356	0.625	0.771	0.296	CC..32.5..	1440	5515	3.0
E10S-SCLCL3	10.00	0.356	0.625	0.771	0.296	CC..32.5..	1440	5515	3.0
E12S-SCLCR3	10.00	0.406	0.750	0.929	0.359	CC..32.5..	1440	5515	3.0
E12S-SCLCL3	10.00	0.406	0.750	0.929	0.359	CC..32.5..	1440	5515	3.0
E16T-SCLCR3	12.00	0.530	1.000	1.280	0.487	CC..32.5..	1440	5515	3.0
E16T-SCLCL3	12.00	0.530	1.000	1.280	0.487	CC..32.5..	1440	5515	3.0

CC..

80° rhombic positive inserts with 7° clearance.

Reference	l	T	d
CC..21.5..	0.254	0.093	0.250
CC..32.5..	0.380	0.156	0.375



CCGT-AL



CCGT-AP



CCMT



CCMW



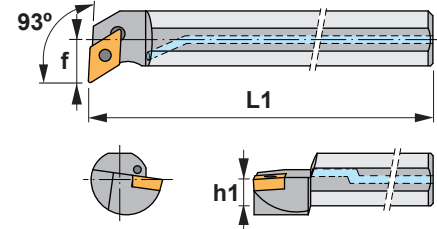
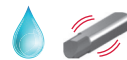
E- SDUC 93°

Characteristics:

Carbide boring bar equipped with rhombic positive insert (angle 55°).

Range starting at Ø6 inches and minimum bore diameter of 0.375 inches.

Axial 0°
Radial -6°

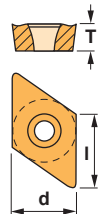


Reference	L1	f	Ø	Ø min.	h1	Insert size			Nm
E06M-SDUCR2	6.00	0.312	0.375	0.598	0.174	DC..21.5..	1425	5507	0.9
E06M-SDUCL2	6.00	0.312	0.375	0.598	0.174	DC..21.5..	1425	5507	0.9
E08R-SDUCR2	8.00	0.375	0.500	0.716	0.235	DC..21.5..	1225	5507	0.9
E08R-SDUCL2	8.00	0.375	0.500	0.716	0.235	DC..21.5..	1225	5507	0.9
E10S-SDUCR2	10.00	0.438	0.625	0.850	0.296	DC..21.5..	1225	5507	0.9
E10S-SDUCL2	10.00	0.438	0.625	0.850	0.296	DC..21.5..	1225	5507	0.9
E12S-SDUCR3	10.00	0.523	0.750	1.039	0.359	DC..32.5..	1440	5515	3.0
E12S-SDUCL3	10.00	0.523	0.750	1.039	0.359	DC..32.5..	1440	5515	3.0

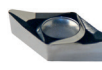
CC..

55° rhombic positive inserts with 7° clearance.

Reference	l	T	d
DC..21.5..	0.305	0.093	0.250
DC..32.5..	0.456	0.156	0.375



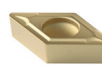
DCGT-AL



DCGT-AP



DCMT



DCMW

