



# SPARE PARTS

## *TURNING SPARE PARTS*

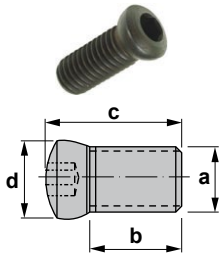
Screws	<b>102-05</b>
Lock pins	<b>106</b>
Clamps	<b>106-10</b>
Shim seats	<b>110-14</b>
Levers	<b>115-16</b>
Others	<b>116-17</b>
Wrenches	<b>118</b>

## *MILLING SPARE PARTS*

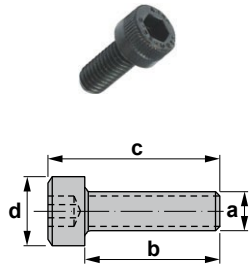
Screws	<b>119-20</b>
Washers	<b>121</b>
Seats	<b>121</b>
Wrenches	<b>121</b>



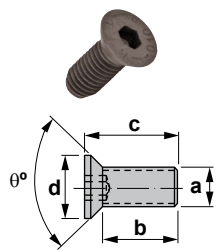
## Screws (Allen)



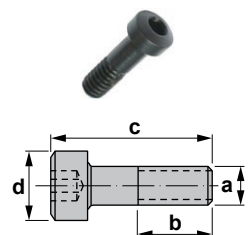
Reference	a	b	c	d	Wrench	Torque (N.m)
1006	M6x1	0.440	0.670	0.354	A4	3.5



Reference	a	b	c	d	Wrench	Torque (N.m)
1075	M5x0.8	0.984	1.185	0.328	A4	3.5
1076	M6x1	1.181	1.417	0.393	A5	4.0
1096	M6x1	0.984	1.220	0.393	A5	4.0
1291	6-32 UNC	0.496	0.630	0.220	A3/32"	2.0
1296	M6x1	0.393	0.551	0.385	A5	4.0
1297	3/16-32 BSF	0.757	0.940	0.309	A5/32"	2.0
1393	M3x0.5	0.157	0.275	0.216	A2.5	2.0
1394	M4	0.240	0.338	0.271	A2.5	2.0
1494	M4x0.7	0.472	0.630	0.275	A3	3.0
1495	M5x0.8	0.629	0.834	0.330	A4	3.5
1695	M5x0.8	0.787	0.929	0.326	A4	3.5
1696	M6x1	0.984	1.141	0.394	A4	3.5
1905	M5x0.8	0.472	0.665	0.326	A4	3.5
1906	M6x1	0.787	1.023	0.393	A5	4.0
1916	M6x1	0.472	0.708	0.393	A5	4.0
1924	M4x0.7	0.472	0.582	0.275	A2.5	2.0
1925	M5x0.8	0.472	0.610	0.334	A3	3.0
1926	M6x1	0.472	0.630	0.393	A4	3.5
1928	M8x1.25	0.629	0.670	0.511	A5	4.0

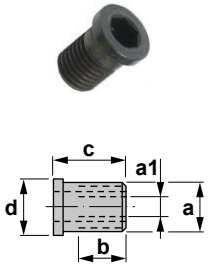


Reference	a	b	c	d	θ°	Wrench	Torque (N.m)
1059	M10x1.5	0.519	0.728	0.452	60	A6	-
1192	M8x1.25	0.543	0.787	0.555	70	A5	4.0

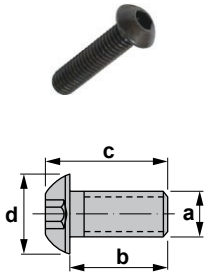


Reference	a	b	c	d	Wrench	Torque (N.m)
1614	W1/4	0.472	0.984	0.393	A4	3.5

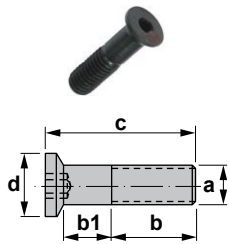
## Screws (Allen)



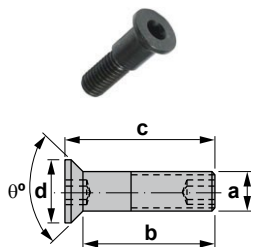
Reference	a	a1	b	c	d	Wrench	Torque (N.m)
1750	M5x0.5	M3.5x0.6	0.196	0.334	0.244	A3.5	-
1760	M6x0.75	M4x0.5	0.216	0.393	0.303	A4	3.5
1764	M5x0.8	M5x0.8	0.228	0.315	0.248	A2	1.4
1765	M6x0.75	M4x0.5	0.177	0.393	0.295	A4	3.5
1766	M6x1	M6x1	0.256	0.393	0.307	A2.5	2.0
1768	M6x1	M6x1	0.523	0.610	0.409	A3	3.0
1770	M6x1	M6x1	0.433	0.590	0.468	A3	3.0



Reference	a	b	c	d	Wrench	Torque (N.m)
1801	10-32 UNF	0.500	0.586	0.346	A1/8"	3.0
1803	M3	0.314	0.370	0.216	A2	1.4
1804	M4x0.7	0.393	0.476	0.295	A2.5	2.0
1806	M6x1	0.984	1.110	0.413	A4	3.5
1808	M8x1.25	1.181	1.350	0.551	A5	4.0
1810	M10x1.5	1.574	1.783	0.708	A6	-
1813	M3	0.177	0.232	0.216	A2	1.4
1814	M4	0.137	0.216	0.295	A2.5	2.0
1815	M5x0.8	0.492	0.590	0.366	A3	3.0
1816	M6x1	0.787	0.913	0.413	A4	3.5

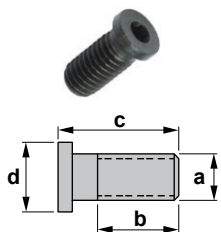


Reference	a	b	b1	c	d	Wrench	Torque (N.m)
1937	10-32 UNF	0.413	0.251	0.748	0.350	A3/32"	2.0



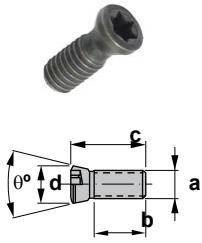
Reference	a	b	c	d	$\theta^\circ$	Wrench	Torque (N.m)
1936	10-32 UNF	0.624	0.750	0.307	90	A3/32"	2.0

## Screws (Torx)

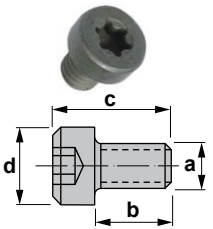


Reference	a	b	c	d	Wrench	Torque (N.m)
1150	M5x0.8	0.393	0.531	0.251	T9	1.4
1160	M6x1	0.374	0.531	0.307	T20	4.0
1161	M6x1	0.255	0.413	0.311	T20	4.0
1180	M8x1	0.374	0.531	0.433	T25	5.0

## Screws (Torx)

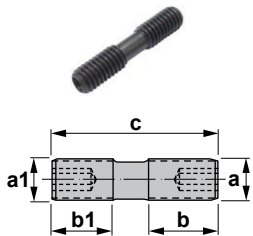


Reference	a	b	c	d	θ°	Wrench	Torque (N.m)
1182	M8x1	0.374	0.531	0.413	60	T25	5.0
1225	M2.5x0.45	0.157	0.275	0.130	55	T7	0.9
1226	M2.5	0.236	0.326	0.157	94	T8	1.2
1230	M3x0.5	0.220	0.354	0.173	55	T8	1.2
1240	M4x0.7	0.244	0.433	0.208	55	T15	3.0
1244	M4x0.7	0.314	0.472	0.275	55	T20	4.0
1250	M5x0.8	0.236	0.472	0.275	55	T20	4.0
1255	M5x0.8	0.354	0.472	0.275	94	T20	4.0
1260	M6x1	0.452	0.630	0.311	55	T25	5.0
1335	M3.5x0.6	0.401	0.590	0.208	55	T20	3.0
1350	M5x0.8	0.700	0.866	0.275	55	T20	4.0
1425	M2.5x0.45	0.118	0.216	0.130	55	T7	0.9
1440	M4x0.7	0.125	0.295	0.208	55	T15	3.0
1450	M5x0.8	0.433	0.669	0.275	55	T20	4.0
1535	M3.5	0.295	0.393	0.196	94	T10	2.0
1540	M4x0.5	0.311	0.555	0.267	60	T15	3.0
1625	M2.5x0.45	0.141	0.255	0.149	60	T8	1.2
SA3	5-40UNC-3A	0.472	0.590	0.216	60	T10	2.0
SA3T	5-40UNC-3A	0.374	0.492	0.216	60	T10	2.0
SA4	8-UNC	0.433	0.590	0.295	60	T20	4.0
SA5	10-32UNF	0.661	0.866	0.322	60	T25	5.0
SN3	5-40UNC-3A	0.255	0.374	0.216	60	T10	2.0
SN4	8-UNC	0.315	0.472	0.295	60	T20	4.0



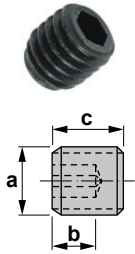
Reference	a	b	c	d	Wrench	Torque (N.m)
SY3	5-40UNC	0.165	0.271	0.212	T10	2.0
SY4	8-32UNC	0.208	0.358	0.267	T20	4.0
SY5	10-32UNF	0.228	0.362	0.330	T25	5.0

## Clamp screws



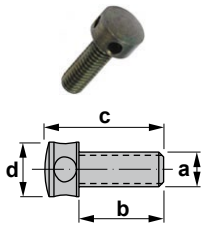
Reference	a	a1	b	b1	c	Wrench	Torque (N.m)
1085	M5x0.8L	M5x0.8R	0.311	0.311	0.838	A2.5	2.0
1086	M6x1L	M6x1R	0.448	0.448	1.157	A3	3.0
1186	M6x1R	M6x1L	0.177	0.177	0.807	A3	3.0
1466	M6x0.75R	M6x0.75L	0.350	0.409	0.921	A7/64	3.0
1488	M8x1L	M8x1R	0.393	0.393	1.023	A4	3.5
XNS-34	10-32 UNF L	10-32 UNF R	0.280	0.280	0.531	A3/32"	2.0
XNS-36	10-32 UNF R	10-32 UNF L	0.251	0.251	0.751	A3/32"	2.0
XNS-47	1/4-28 UNF R	1/4-28 UNF L	0.267	0.267	0.807	A1/8"	3.0
XNS-48	1/4-28 UNF R	1/4-28 UNF L	0.377	0.377	1.000	A1/8"	3.0
XNS-58	5/16-24 UNF R	5/16-24 UNF L	0.279	0.500	1.000	A5/32"	3.5
XNS-510	5/16-24 UNF R	5/16-24 UNF L	0.500	0.500	1.248	A5/32"	3.5

## Screws



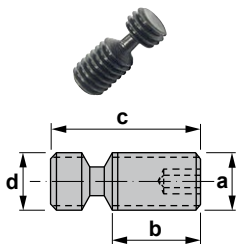
Reference	a	b	c	Wrench	Torque (N.m)
1503	M3x0.5	0.078	0.157	A1.5	0.6
1504	M4x0.7	0.078	0.157	A2	1.4
1505	M5x0.8R	0.118	0.196	A2.5	2.0
1506	M6x1R	0.157	0.196	A3	3.0
1508	M8x1.25R	0.196	0.314	A4	3.5

## Adjustable screws

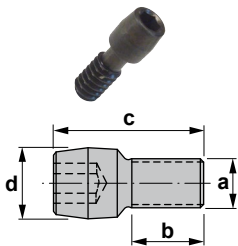


Reference	a	b	c	d	Wrench	Torque (N.m)
1403	M3x0.5	0.255	0.374	0.157	A4	3.5
1404	M4x0.7	0.354	0.492	0.275	A2.5	2.0
1405	M5x0.8	0.413	0.650	0.354	A2	1.4
1406	M6x1	0.472	0.708	0.433	A2.5	2.0
1408	M8x1.25	0.590	0.826	0.511	A3	3.0

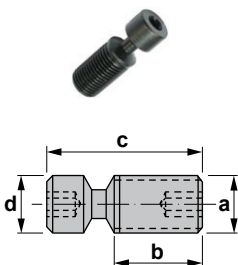
## Lever lock system - Screws



Reference	a	b	c	d	Wrench	Torque (N.m)
1605	M5x0.8	0.240	0.472	0.196	A2	1.4



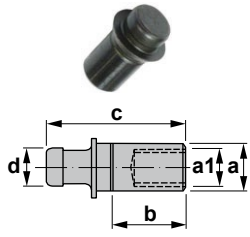
Reference	a	b	c	d	Wrench	Torque (N.m)
1676	6-32 UNC	0.216	0.444	0.196	A3/32"	2.0
1677	10-24 UNC	0.283	0.681	0.244	A3/32"	2.0



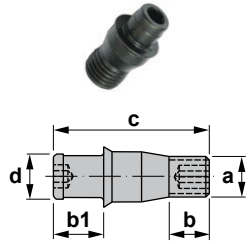
Reference	a	b	c	d	Wrench	Torque (N.m)
1606	M6x1	0.338	0.657	0.236	A2.5	2.0
1608	M8x1	0.342	0.814	0.314	A3	3.0
1610	M10x1	0.523	1.070	0.393	A4	3.5
1612	M12x1	0.681	1.417	0.472	A5	4.0
1618	M8x1	0.440	0.885	0.314	A3	3.0
1626	M6x1	0.314	0.527	0.236	A2.5	2.0
1638	M8x1	0.405	0.830	0.314	A3	3.0
1648	M8x1	0.358	0.670	0.314	A3	3.0
1708	M8x1	0.480	0.925	0.314	A3	3.0
1710	M10x1	0.681	1.196	0.393	A4	3.5



## Lock pins

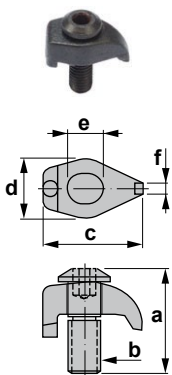


Reference	a	a1	b	c	d
1642	0.177	M3x0.5	0.300	0.519	0.145
1643	0.177	M3x0.5	0.133	0.334	0.145
1644	0.177	M3x0.5	0.196	0.397	0.145
1647	0.236	M4x0.7	0.122	0.334	0.196
1661	0.236	M4x0.7	0.220	0.531	0.196
1682	0.314	M6x1	0.362	0.650	0.303



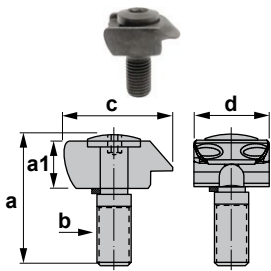
Reference	a	b	b1	c	d	Wrench	Torque (N.m)
1657	M6x1	0.196	0.275	0.732	0.196	A2.5	2.0
1665	M5x0.8	0.090	0.196	0.511	0.141	A2	1.4
1673	M6	0.189	0.248	0.866	0.248	A3	3.0
1674	M6	0.177	0.248	0.862	0.303	A4	3.5
1675	M5x0.8	0.133	0.196	0.637	0.141	A2	1.4
1678	8-32 UNC	0.263	0.279	0.578	0.196	A3/32"	2.0
1679	10-24 UNC	0.251	0.279	0.748	0.246	A3/32"	2.0
NL-23	8-32 UNF	0.137	0.125	0.320	0.082	A1/16"	0.6
NL-33	12-32 UNF	0.137	0.129	0.346	0.145	A5/64"	1.4
NL-33L	12-32 UNF	0.137	0.196	0.413	0.145	A5/64"	1.4
NL-34	10-32 UNF	0.133	0.138	0.450	0.219	A5/64"	1.4
NL-34L	10-32 UNF	0.133	0.196	0.511	0.145	A5/64"	1.4
NL-44	1/4-28 UNF	0.177	0.216	0.519	0.196	A3/32"	2.0
NL-46	1/4-28 UNF	0.251	0.220	0.677	0.188	A3/32"	2.0
NL-46S	1/4-28 UNF	0.177	0.220	0.657	0.188	A3/32"	2.0
NL-58	5/16-24 UNF	0.196	0.267	0.858	0.236	A1/8"	3.0
NL-68	3/8-24 UNF	0.196	0.267	0.858	0.295	A9/64"	3.5
NL-68L	3/8-24 UNF	0.196	0.362	0.952	0.307	A9/64"	3.5
NL-810	7/16-20 UNF	0.236	0.377	1.165	0.354	A5/32"	2.0

## Top clamp (C) system - Clamps



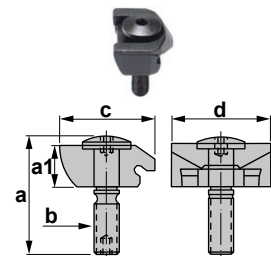
Reference	a	b	c	d	e	f	Wrench	Torque (N.m)
2304	0.551	M4x0.7	0.519	0.314	0.196	0.078	A2.5	2.0
2305	0.736	M5x0.8	0.661	0.393	0.216	0.078	A3	3.0

## Wedge clamp (W) system - Clamps

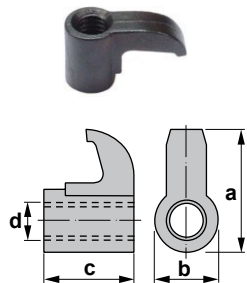


Reference	a	a1	b	c	d	Wrench	Torque (N.m)
2006	0.767	0.267	M5x0.5	0.578	0.433	A2.5	2.0
2007	0.767	0.271	M5x0.5	0.578	0.433	A7/64"	3.0
2011	1.023	0.318	M8x1	0.866	0.669	A5	4.0
2012	1.023	0.468	M8x1	0.846	0.472	A3/16"	4.0
2013	1.023	0.326	M8x1	0.842	0.590	A3/16"	4.0
2014	1.023	0.326	M8x1	0.842	0.590	A5	4.0
2024	0.944	0.362	M8x1	0.885	0.669	A5	4.0

## Wedge clamp (M) system - Clamps

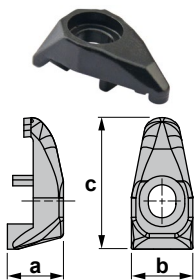


Reference	a	a1	b	c	d	Wrench	Torque (N.m)
2017	0.944	0.315	M5x0.8	0.618	0.732	A2.5	2.0
2019	1.023	0.299	M8x1	0.870	0.472	A3	3.0
2029	1.023	0.330	M8x1	0.879	0.670	A3	3.0



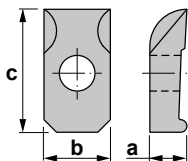
Reference	a	b	c	d
2604	0.582	0.311	0.440	M5x0.8L
2613	0.728	0.374	0.531	M6x1L
2614	0.854	0.374	0.531	M6x1L
CL-6	0.580	0.310	0.440	10-32 TPI UNF L
CL-7	0.640	0.310	0.310	10-32 TPI UNF L
CL-12	0.881	0.430	0.660	5/16-24 TPI UNF L
CL-20	0.730	0.370	0.379	1/4-28 TPI L
CL-22	0.854	0.374	0.531	1/4-28L
CL-30	1.000	0.425	0.661	5/16-24L

## Dimple lock system - Clamps

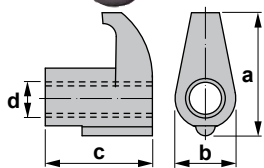
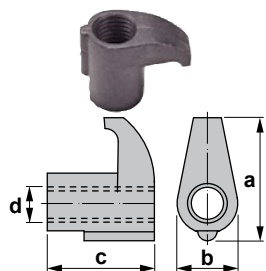


Reference	a	b	c
2708	0.444	0.507	0.952
2712	0.496	0.543	1.165
2716	0.559	0.543	1.334
2719	0.559	0.543	1.393

## Threading - Clamps

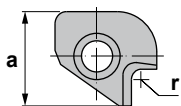


Reference	a	b	c	Wrench	Torque (N.m)
2101	0.208	0.374	0.700	T15	0.6

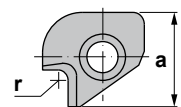


Reference	a	b	c	d
2722	0.756	0.370	0.653	M6x0.75L
2727	0.795	0.425	0.653	M8x1L

## KNUX - Clamps

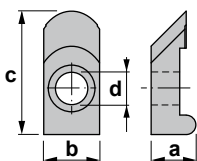


Reference	a	r
2316	0.925	0.098



Reference	a	r
2326	0.925	0.098

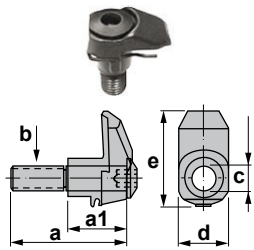
## Ceramic tools - Clamps



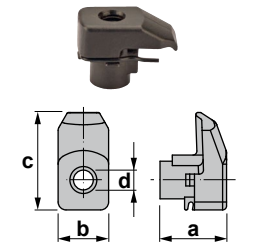
Reference	a	b	c	d	$\theta^\circ$	Wrench	Torque (N.m)
2121	0.271	0.338	0.748	0.295	45	T20	4.0
2122	0.334	0.464	0.972	0.322	45	T25	5.0



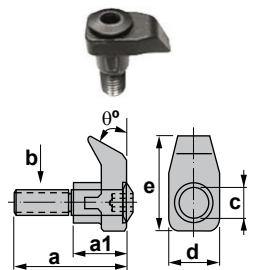
## Ceramic tools - Clamps



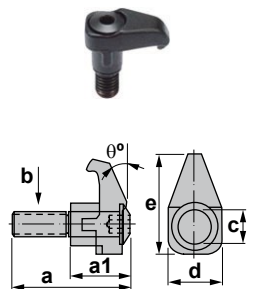
Reference	a	a1	b	c	d	e	Wrench	Torque (N.m)
2413	1.169	0.630	M8x1.25	0.322	0.500	0.862	A4	3.5
2417	1.169	0.692	M8x1.25	0.314	0.500	0.968	A4	3.5



Reference	a	b	c	d	Wrench	Torque (N.m)
2713	0.322	0.500	0.881	0.196	A3	3.0
2717	0.318	0.500	0.968	0.196	A3	3.0

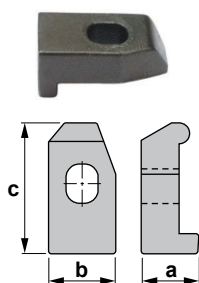


Reference	a	a1	b	c	d	e	θ°	Wrench	Torque (N.m)
2414	1.169	0.594	M8x1.25	0.322	0.500	0.885	20	A4	3.5

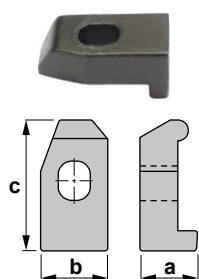


Reference	a	a1	b	c	d	e	θ°	Wrench	Torque (N.m)
2415	1.169	0.618	M8x1.25	0.322	0.511	1.019	8	A4	3.5
2428	1.169	0.618	M8x1.25	0.322	0.511	1.125	7	A4	3.5
2432	1.169	0.618	M8x1.25	0.322	0.511	1.125	7	A4	3.5
2471	1.169	0.618	M8x1.25	0.322	0.511	1.019	8	A4	3.5

## Notch tools - Clamps

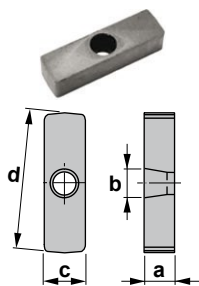


Reference	a	b	c
TF-146	0.216	0.354	0.539
TF-72	0.381	0.444	0.866
TF-74	0.283	0.354	0.539



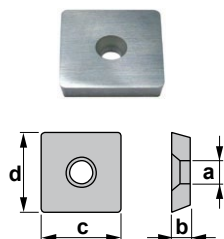
Reference	a	b	c
TF-147	0.216	0.354	0.539
TF-73	0.381	0.444	0.866
TF-75	0.283	0.354	0.539

## Shim seat



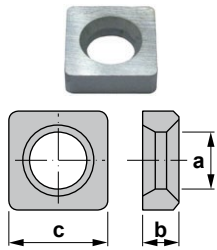
Reference	a	b	c	d
3521	0.187	0.165	0.248	0.874

## Square shim seats

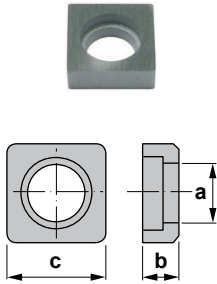


Reference	a	b	c	d
3109	0.090	0.125	0.320	0.320
3112	0.090	0.125	0.444	0.444
3119	0.130	0.125	0.681	0.681

## Square shim seats

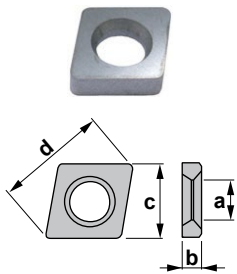


Reference	a	b	c
3512	0.251	0.125	0.456
3515	0.311	0.187	0.574
3519	0.377	0.187	0.700
3525	0.503	0.250	0.952

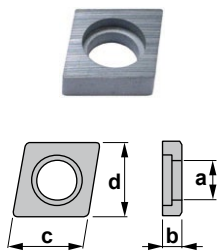


Reference	a	b	c
3514	0.260	0.156	0.448
ISSN-322	0.225	0.125	0.365
ISSN-422	0.315	0.125	0.488
ISSN-432	0.291	0.187	0.488
ISSN-434	0.291	0.187	0.488
ISSN-442	0.291	0.250	0.488
ISSN-454	0.291	0.312	0.488
ISSN-533	0.366	0.187	0.614
ISSN-534	0.377	0.187	0.618
ISSN-633	0.444	0.187	0.740
ISSN-846	0.576	0.251	0.998

## 80° Rhombic shim seats

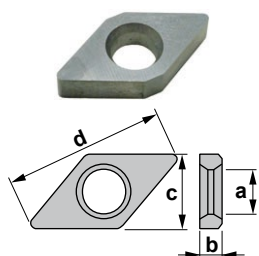


Reference	a	b	c	d
3612	0.252	0.125	0.456	0.673
3616	0.311	0.187	0.574	0.822
3619	0.378	0.187	0.700	1.023
3625	0.503	0.250	0.952	1.417

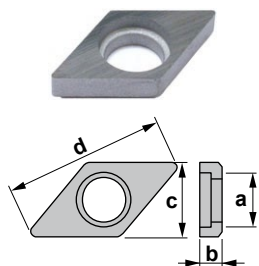


Reference	a	b	c	d
3614	0.260	0.156	0.448	0.448
ICSN-332	0.244	0.196	0.354	0.354
ICSN-422	0.283	0.118	0.492	0.492
ICSN-432	0.291	0.187	0.488	0.488
ICSN-434	0.291	0.187	0.488	0.488
ICSN-442	0.290	0.250	0.490	0.490
ICSN-454	0.291	0.312	0.488	0.488
ICSN-523	0.390	0.125	0.614	0.614
ICSN-533	0.390	0.187	0.614	0.614
ICSN-534	0.390	0.187	0.614	0.614
ICSN-623	0.444	0.125	0.740	0.740
ICSN-633	0.444	0.187	0.740	0.740

## 55° Rhombic shim seats

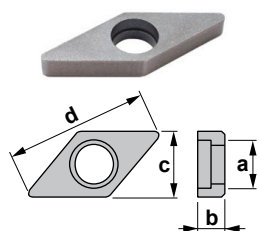


Reference	a	b	c	d
3711	0.192	0.106	0.334	0.669
3715	0.251	0.125	0.456	0.921
3725	0.255	0.187	0.460	0.921



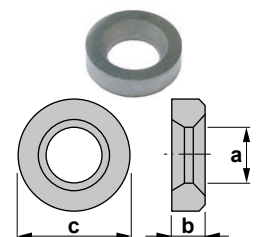
Reference	a	b	c	d
3714	0.260	0.125	0.334	0.685
IDSN-322	0.251	0.125	0.369	0.716
IDSN-422	0.322	0.187	0.496	1.007
IDSN-432	0.322	0.187	0.492	1.007
IDSN-434	0.222	0.187	0.492	0.921
IDSN-442	0.322	0.250	0.492	0.921
IDSN-533	0.452	0.187	0.614	1.220

## 35° Rhombic shim seats

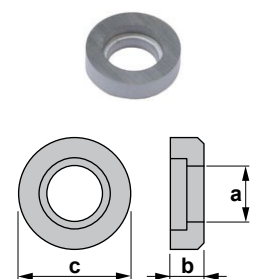


Reference	a	b	c	d
3718	0.263	0.125	0.330	1.023
IVSN-322	0.260	0.125	0.370	1.019
IVSN-433	0.330	0.187	0.494	1.426

## Round shim seats

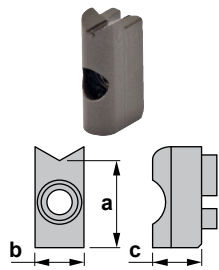


Reference	a	b	c
3816	0.251	0.187	0.533
3820	0.314	0.187	0.680
3825	0.377	0.250	0.862
3832	0.496	0.250	1.102
3919	0.378	0.187	0.724
3925	0.507	0.250	0.976

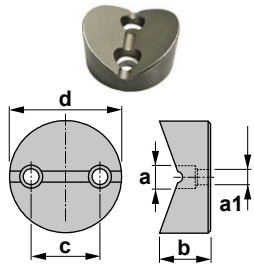


Reference	a	b	c
3811	0.208	0.125	0.346
3814	0.208	0.125	0.417
IRSN-42	0.291	0.125	0.490
IRSN-43	0.291	0.187	0.490
IRSN-44	0.287	0.251	0.490
IRSN-45	0.291	0.311	0.490
IRSN-53	0.385	0.187	0.614
IRSN-63	0.444	0.187	0.740
IRSN-84	0.570	0.250	0.990

## Round shim seats

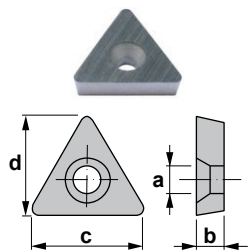


Reference	a	b	c
3849	0.541	0.303	0.303
3852	0.598	0.437	0.425

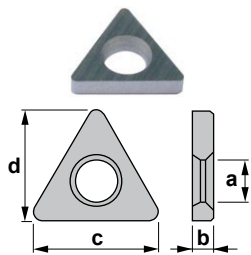


Reference	a	a1	b	c	d
3817	0.177	0.118	0.305	0.275	0.533
3819	0.177	0.118	0.335	0.330	0.651

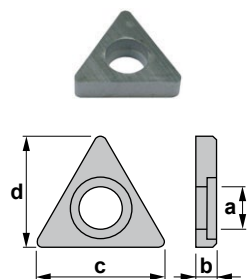
## Triangular shim seats



Reference	a	b	c	d
3116	0.090	0.125	0.512	0.452
3122	0.130	0.125	0.676	0.594

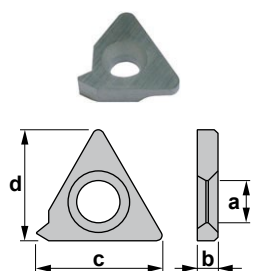


Reference	a	b	c	d
3416	0.192	0.108	0.532	0.468
3422	0.248	0.125	0.744	0.653

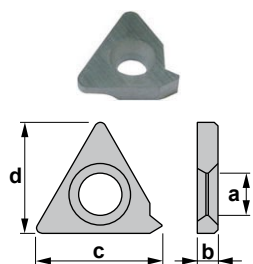


Reference	a	b	c	d
3414	0.208	0.125	0.533	0.470
ITSN-322	0.232	0.125	0.574	0.507
ITSN-324	0.224	0.130	0.561	0.503
ITSN-342	0.232	0.250	0.586	0.515
ITSN-433	0.291	0.187	0.775	0.681
ITSN-443	0.301	0.250	0.795	0.700
ITSN-533	0.389	0.187	0.994	0.874
ITSN-637	0.515	0.187	1.143	1.015

## Shim seats for threading

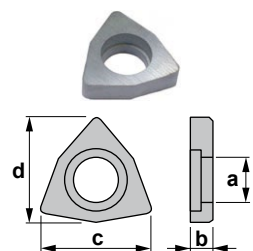


Reference	a	b	c	d
YE3	0.155	0.125	0.500	0.488
YE4	0.208	0.157	0.681	0.681
YE5	0.248	0.228	0.929	0.877



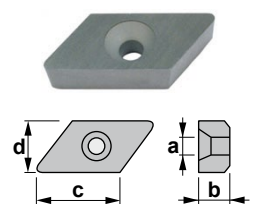
Reference	a	b	c	d
3420	0.311	0.125	0.751	0.590
3421	0.377	0.125	0.751	0.590
YI3	0.155	0.125	0.503	0.503
YI4	0.208	0.157	0.681	0.681
YI5	0.248	0.228	0.930	0.877

## Trigon shim seats

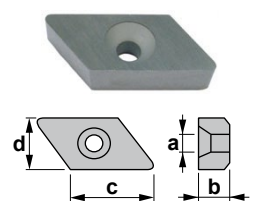


Reference	a	b	c	d
3006	0.200	0.125	0.444	0.425
3008	0.251	0.125	0.622	0.598
IWSN-322	0.248	0.125	0.470	0.451
IWSN-433	0.287	0.187	0.630	0.602

## KNUX - Shim seats

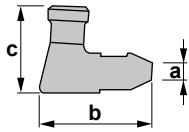


Reference	a	b	c	d
3226	0.130	0.187	0.570	0.364

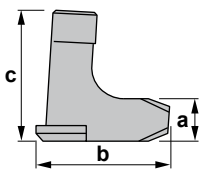


Reference	a	b	c	d
3236	0.130	0.187	0.570	0.364

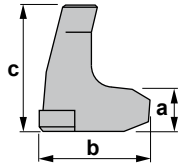
## Levers



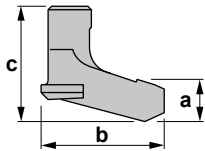
Reference	a	b	c
8005	0.090	0.397	0.307



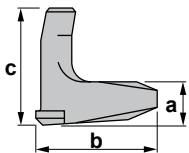
Reference	a	b	c
8009	0.133	0.401	0.472
8012	0.165	0.531	0.515
8016	0.212	0.649	0.673
8019	0.322	0.811	0.826
8025	0.322	1.011	0.992



Reference	a	b	c
8120	0.267	0.803	0.724
8125	0.299	0.933	0.901
8132	0.354	1.188	1.051

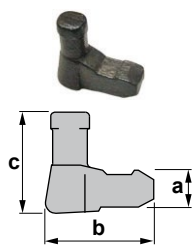


Reference	a	b	c
8212	0.185	0.527	0.476

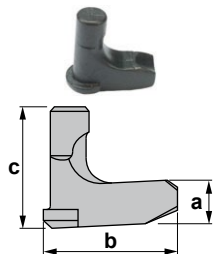


Reference	a	b	c
8312	0.165	0.531	0.519

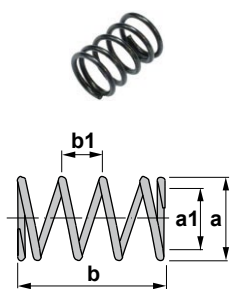
### Levers and others



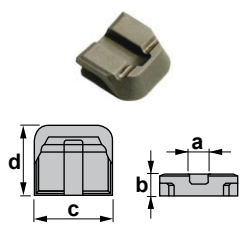
Reference	a	b	c
8216	0.133	0.397	0.374



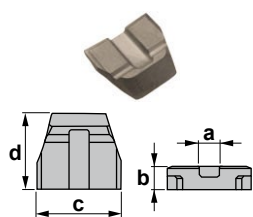
Reference	a	b	c
8415	0.232	0.637	0.578



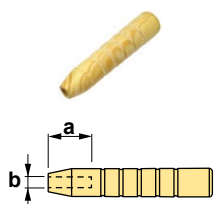
Reference	a	a1	b	b1
4294	0.271	0.208	0.492	0.098
4295	0.374	0.275	0.650	0.137



Reference	a	b	c	d
9414	0.102	0.142	0.496	0.433



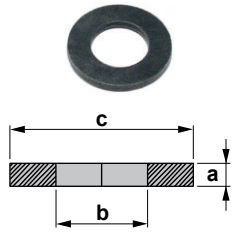
Reference	a	b	c	d
9416	0.118	0.137	0.496	0.433



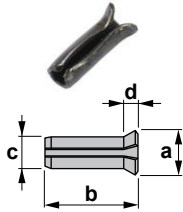
Reference	a	b
0009	0.590	0.157
0012	0.590	0.196
0015	0.590	0.248
0019	0.472	0.334
0025	0.551	0.472



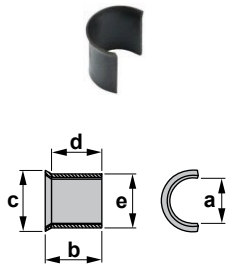
## Others



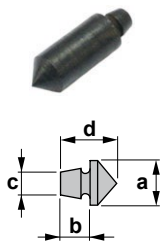
Reference	a	b	c
2803	0.019	0.126	0.267
2804	0.031	0.169	0.354
2806	0.059	0.252	0.472
2808	0.063	0.330	0.630
2810	0.098	0.413	0.826



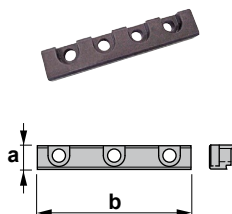
Reference	a	b	c	d
4002	0.106	0.393	0.082	0.043
4012	0.141	0.393	0.118	0.059



Reference	a	b	c	d	e
4109	0.173	0.204	0.224	0.181	0.192
4112	0.216	0.232	0.275	0.204	0.260
4115	0.275	0.362	0.354	0.303	0.322
4119	0.334	0.444	0.413	0.385	0.381
4125	0.393	0.468	0.598	0.381	0.519
4135	0.216	0.303	0.283	0.267	0.260

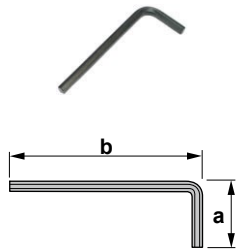


Reference	a	b	c	d
4203	0.189	0.122	0.098	0.492
4204	0.189	0.122	0.098	0.570



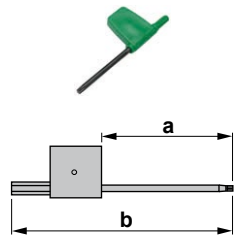
Reference	a	b
2916	0.393	2.520
2920	0.637	2.952
2930	0.760	3.307
2935	0.760	3.700
2942	0.760	4.094
2950	0.826	4.330

## Wrenches (Allen)



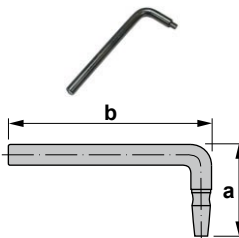
Reference	a	b	Wrench	Torque (N.m)
5002	0.708	2.027	A2	1.4
5003	0.874	2.535	A3	3.0
5004	1.086	2.858	A4	3.5
5005	1.260	3.267	A5	4.0
5006	1.456	3.780	A6	-
5015	0.567	1.791	A1.5	0.6
5025	0.748	2.256	A2.5	2.0
5100	0.590	1.773	A1/16"	0.6
5102	0.679	2.007	A5/64"	1.4
5103	0.895	2.622	A1/8"	3.0
5105	1.208	3.250	A3/16"	3.0
5124	0.748	2.244	A3/32"	2.0
5126	0.856	2.560	A7/64"	3.0
5135	0.966	2.756	A9/64"	3.5

## Wrenches (Torx)

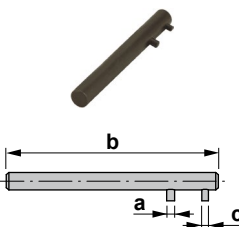


Reference	a	b	Wrench	Torque (N.m)
5507	1.377	2.480	T7	0.9
5508	1.732	2.834	T8	1.2
5510	1.496	2.913	T10	2.0
5515	1.791	3.248	T15	3.0
5516	1.681	3.413	T15 / A3.5	3.0 / -
5517	1.800	3.767	T15 / A4	3.0 / 3.5
5520	1.807	3.150	T20	4.0
5525	2.086	3.622	T25	5.0

## Wrenches for blades

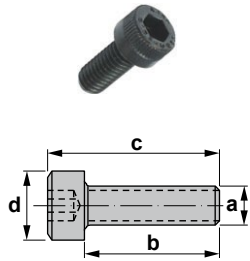


Reference	a	b
5732	1.082	3.189

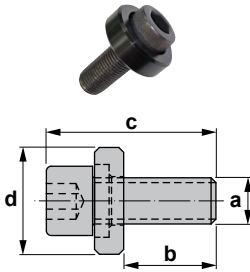


Reference	a	b	c
5735	0.118	3.150	0.098

## Screws (Allen)



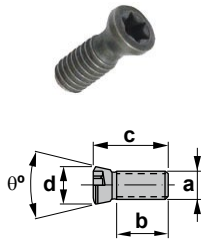
Reference	a	b	c	d	Wrench	Torque (N.m)
1296	M6x1	0.393	0.551	0.385	A5	4.0
1905	M5x0.8	0.472	0.665	0.326	A4	3.5
UNF.12	1/2-20 UNF	1.250	1.750	0.750	A3/8"	-
UNF.14	14-28 UNF	1.348	1.500	0.374	A5/32"	2.0
UNF.34	5/8-18 UNF	2.000	2.625	0.937	A1/2"	-
UNF.38	3/8-24 UNF	1.000	1.375	0.562	A5/16"	-



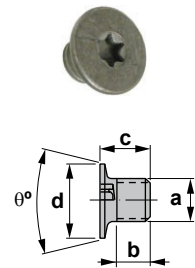
Reference	a	b	c	d	Wrench	Torque (N.m)
10107	3/8-24 UNF	0.858	1.375	0.868	A5/16"	-
10110	1/2-20 UNF	1.128	1.750	1.189	A3/8"	-
10112	5/8-18 UNF	1.100	1.866	1.500	A1/2"	-



## Screws (Torx)

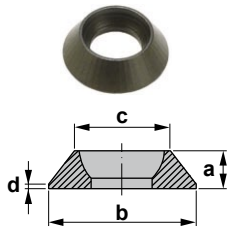


Reference	a	b	c	d	θ°	Wrench	Torque (N.m)
1225	M2.5x0.45	0.157	0.275	0.130	55	T7	0.9
1230	M3x0.5	0.220	0.354	0.173	55	T8	1.2
1235	M3.5	0.255	0.374	0.208	55	T15	3.0
1240	M4x0.7	0.244	0.433	0.208	55	T15	3.0
1240-IP	M4x0.7	0.260	0.393	0.208	60	T15-IP	3.5
1245	M4.5x0.75	0.291	0.448	0.251	55	T15	3.0
1250	M5x0.8	0.236	0.472	0.275	55	T20	4.0
1341	M4x0.7	0.185	0.354	0.208	55	T15	3.0
1425	M2.5x0.45	0.118	0.216	0.130	55	T7	0.9
1430-IP	M3x0.5	0.157	0.263	0.153	60	T10-IP	2.5
1435	M3.5	0.122	0.275	0.208	55	T15	3.0
1440	M4x0.7	0.125	0.295	0.208	55	T15	3.0
1440-IP	M4x0.7	0.165	0.314	0.208	60	T15-IP	3.5
1445	M4.5x0.75	0.212	0.354	0.248	55	T15	3.0
1550	M5x0.8	0.232	0.433	0.251	43	T20	4.0
1622	M2.2x0.45	0.157	0.236	0.133	60	T7	0.9
1630	M3x0.5	0.204	0.326	0.169	60	T9	1.4
1635	M3.5x0.6	0.216	0.354	0.185	60	T10	2.0
1640	M4	0.275	0.413	0.216	60	T15	3.0
1845	M4.5x0.75	0.271	0.354	0.255	90	T15	3.0
1846	M4.5x0.75	0.255	0.440	0.255	90	T15	3.0
1847	M4.5x0.75	0.314	0.433	0.263	90	T15	3.0



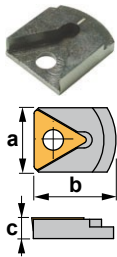
Reference	a	b	c	d	θ°	Wrench	Torque (N.m)
1735	M3.5	0.039	0.118	0.204	90	T7	0.9
1745	M4.5x0.75	0.149	0.204	0.263	100	T15	3.0
1835	M3.5x0.6	0.078	0.157	0.204	90	T7	0.9

## Washers



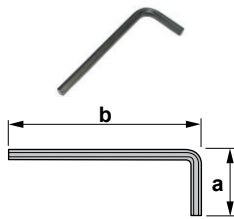
Reference	a	b	c	d
2009	0.118	0.354	0.244	0.015
2010	0.125	0.393	0.283	0.023

## Seats



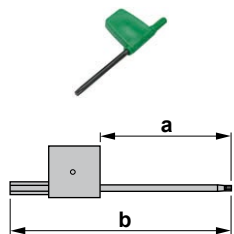
Reference	a	b	c
6921	0.433	0.507	0.114
6926	0.630	0.767	0.188

## Wrenches (Allen)

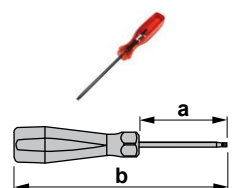


Reference	a	b	Wrench	Torque (N.m)
5003	0.874	2.535	A3	3.0

## Wrenches (Torx)



Reference	a	b	Wrench	Torque (N.m)
5507	1.377	2.480	T7	0.9
5508	1.732	2.834	T8	1.2
5509	1.496	2.913	T9	1.4
5510	1.496	2.913	T10	2.0
5510-IP	1.496	2.913	T10-IP	2.5
5515	1.791	3.248	T15	3.0
5515-IP	1.791	3.248	T15-IP	3.5
5520	1.807	3.149	T20	4.0



Reference	a	b	Wrench	Torque (N.m)
5607	2.000	5.090	T7	0.9
5615	2.622	3.897	T15	3.0
5620	3.937	8.177	T20	4.0

